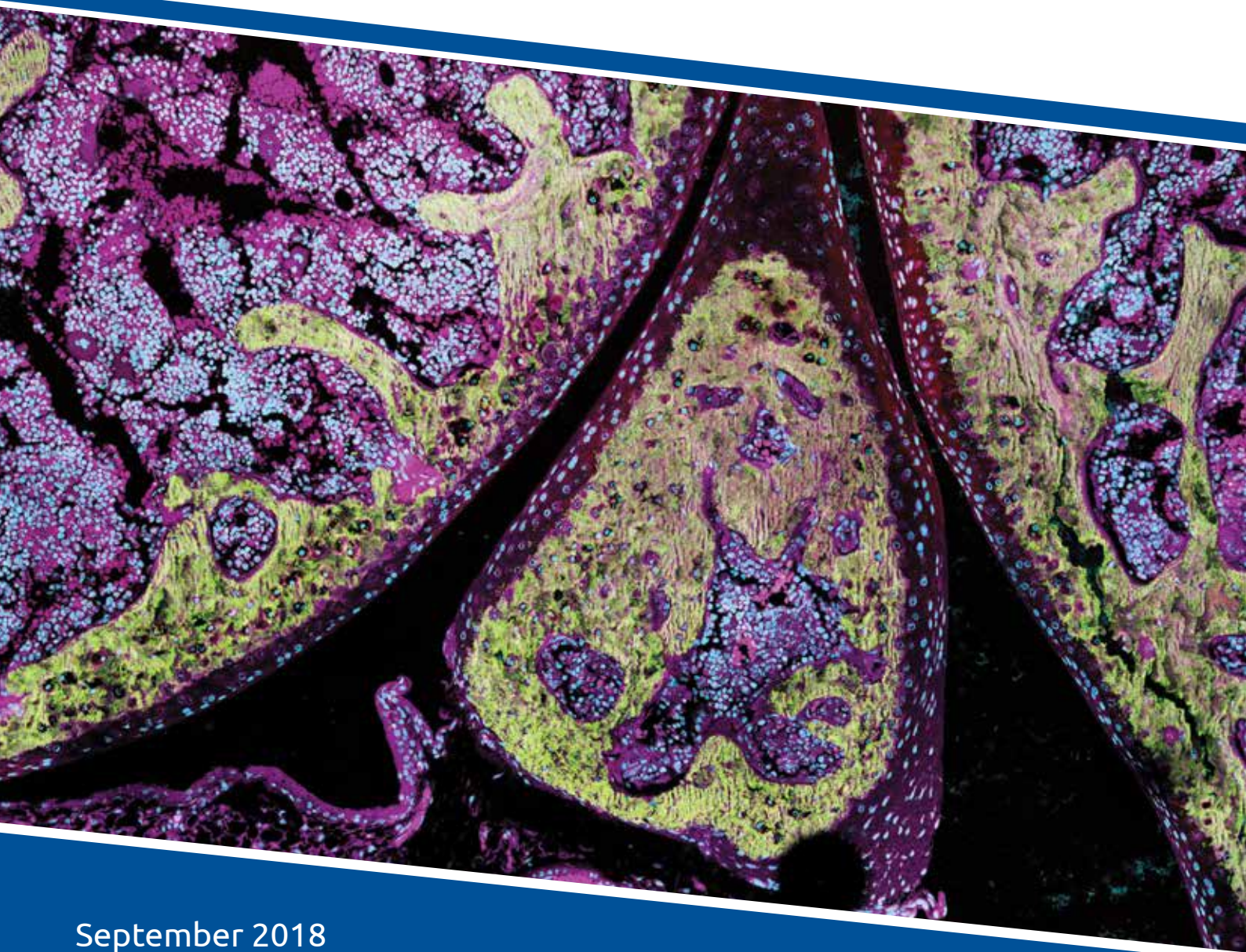


Enhancing Lives
Because of You



PERTH BONE &
TISSUE BANK INC.

Allograft Catalogue



September 2018

CONTENT:

1. About.....1 - 2

- Donor awareness
- Donor sourcing & screening
- Allograft processing
- Supply
- Cost
- For Medical Professionals
- Research & Development

2. PlusLife Allografts.....3 - 7

- Milled bone
- Tailored Allograft
- Conventional Allograft

3. Acknowledgements.....8



PlusLife (Perth Bone & Tissue Bank) is a not-for-profit organisation and is recognised as one of Australia's premier tissue banks.

As a Therapeutic Goods Administration licenced tissue bank, we are committed to providing medical professionals with safe and effective human tissue allografts for transplantation in many areas.

PlusLife's priority is to service demand for bone and tissue allografts primarily in Western Australia.

However, we also distribute graft material to other Australian states, New Zealand and South East Asia in some instances.

We pride ourselves on exclusively retrieving bone & tissue **donated in Australia**, from which allografts of the highest quality are **processed in Australia**.

PlusLife is able to provide life enhancing allografts through the gift of bone & tissue donation.



About

DONATION AWARENESS

Education programs are regularly undertaken to raise community awareness of PlusLife's living (Femoral Head) & deceased (Cadaveric) donor programs by engaging with other not for profit and charitable organisations.

DONOR SOURCING AND SCREENING

PlusLife adheres to strict exclusion criteria and regulatory controls for screening and testing mandated by the Therapeutic Goods Administration thus minimising the risk of the transmission of disease and ensuring the safety of recipients.

All donors are tested for a range of infectious diseases including Hepatitis B & C, HIV (AIDS) and Syphilis. Microbiology and histopathology testing is also conducted on donor samples.

ALLOGRAFT PROCESSING

Constant monitoring of our C grade cleanroom environment and sampling of tissue throughout processing enables us to provide assurance that the tissue we produce is of a high standard.

All processed allograft is terminally irradiated (25kGy) prior to distribution. However tendons undergo low dose irradiation of 15kGy.

At PlusLife, each allograft is produced from a single donor to ensure complete traceability. We do not practice donor pooling.

SUPPLY

The allograft range in this catalogue is subject to availability and may change in manufacturing specification at any time.



COST

There is no cost associated with donating bone and tissue, nor is any payment made to the donor or donor family.

Allograft fees are charged directly to the hospital, and are fully recoverable through the private health funds or covered by Medicare if the surgery is completed in a public hospital.

Fees for the supply of allografts incorporate the many associated costs such as lab charges, consumables used in the retrieval and processing of the allograft, regulatory and quality system costs and administration costs.

Freight for local (WA) graft is included in graft fees, however consignments sent outside WA attract an air freight and handling charge which is payable by the hospital and is not currently recoverable.

FOR MEDICAL PROFESSIONALS

PlusLife has a wide range of musculoskeletal tissue allografts available.

We can provide high resolution photographs of most allografts (taken at processing) along with accurate measurements to ensure the allograft meets your needs. Please note that these photos are taken prior to irradiation.

Annotated X-rays are also available to be sent electronically.

Our Technicians are available 24/7 to assist Medical Professionals and hospital staff with questions regarding ordering and distribution of our allograft.

**Phone: 08 6144 3500
(Business & after hours)**

**Order forms available on our website:
www.pluslife.org.au**

Please send order forms directly to:

**Postal: PO Box 5042 Midland
WA 6056**

**Email: tech@pluslife.org.au
Fax: 08 6144 4259**

RESEARCH & DEVELOPMENT

Our new Midland facility will enable us to collaborate with clinicians & researchers in developing more highly advanced allograft which meet and exceed clinical expectations; therefore we welcome clinical input and the opportunity to discuss research & development collaborations.



PLUSLIFE ALLOGRAFTS

- Donated in Australia, Processed in Australia
- Screened and processed in accordance with Therapeutic Goods Administration regulations
 - ✓ **ARTG ID 229915**
- Recoverable by health funds/Medicare
- Available for many applications

NEURO & SPINE

- Milled Bone
Coarse (8-10mm),
Fine (5-8mm)
- Pellet
- Block
- Ring

ORTHOPEDIC & SPORTS MEDICINE

- Dowel
- Plug
- Strut
- Osteotomy/
Tricortical
Wedge
- Low Dose irradiated
Tendons (15kGy)

✓ Tailored Allograft

FACIAL / ORAL

- Milled Bone:
Ultra fine (0.5-1mm),
Super fine (1-3mm)
- Cortical segment

✓ Conventional Allograft

- Long Bone
- Condyle
- Femoral Head
- Hemi-pelvis

- Each allograft produced from a single donor to ensure complete traceability
- Terminally irradiated
- Low dose irradiated tendons(15kGy)

- PlusLife is a DonateLife Partner

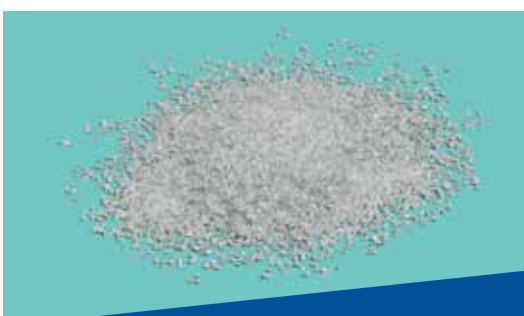


- Composed of cortico-cancellous bone which enables natural resorption while providing a scaffold for bony ingrowth
 - Osteoconductive
 - Cost effective when using a large quantity vs multiple small quantities per procedure
 - Available in wide range of particle sizes and quantities- <5g(10cc) up to >50g(100cc)
- ✓ **Cost effective when using a large quantity vs multiple small quantities per procedure**

MILLED BONE – shaded units are unavailable						
Particle Size	Unit Weight/Volume (volume is for the given weight)					
	<5g 5 ~ <10cc ~	-9g1 10-20cc	0-19g ~ 21-39cc	20-29g ~ 40-58cc	30-50g ~60-100cc	>50g ~>100cc
Coarse (8 - 10mm)						
Fine (5 - 8mm)						
Super Fine (1 – 3mm)						
Ultra Fine (0.5 - 1mm)						

Pellet form also available – 3 pellets per package

ITEM	REBATE CODE	DESCRIPTION
Milled <5 grams (<10cc equivalent)	PBT62	Bone filling material consisting of both compact and spongy bone that has been fragmented to varying sizes through milling action; May be coarse, fine, super fine or ultra-fine milled; predominantly cancellous and free of cartilage. Packaged by net weight (gr) as indicated on packaging.
Milled 5-9 grams (10-20cc equivalent)	PBT63	
Milled 10-19 grams (20-38cc equivalent)	PBT64	
Milled 20-29 grams (40-58cc equivalent)	PBT08	
Milled 30-50 grams (60-100cc equivalent)	PBT09	
Milled >50 grams (>100cc equivalent)	PBT10	
Pellet form	PBT66	Milled bone in pellet form – 3 pellets per package.



Milled Bone (Coarse/Fine/Ultra Fine/Super Fine) Cortico-cancellous



PBT17 Distal Femur



PBT20 Proximal Femur (head removed)



ITEM	REBATE CODE	DESCRIPTION
Femur whole	PBT18	Entire femur left or right, with or without femoral head. If femoral head removed, transected at femoral neck.
Femur – Distal	PBT17	Distal portion of femur, transected through the shaft, incorporating both femoral condyles.
Femur – Proximal with femoral head	PBT62	Proximal portion of the femur, transected through the shaft, with the femoral head. (Subject to availability)
Femur – Proximal without femoral head	PBT20	Proximal portion of the femur, transected through the shaft, without the femoral head.
Femoral Head –Whole	PBT22	Head of the femur, removed from proximal femur - transected at the femoral neck; supplied as whole or half.

ITEM	REBATE CODE	DESCRIPTION
Femoral Condyle	PBT21	(Lateral/Medial) lower extremity of the (left/right) femur inclusive of cartilaginous surfaces transected with approximately ¼ of the length of the shaft intact.
Femoral Ring	PBT24	A cylinder of cortical bone, enclosing a cylinder of cancellous bone, cut from the shaft of the femur - depth in mm indicated on the packaging.
Femur / Tibia shaft middle third	PBT19	The mid-portion of the femur or tibia removed by transecting the femur just below the diaphysis of the femur.



PBT21 Femoral Condyle
(split – lateral/medial)



PBT19 Shaft (Femoral/Tibial)



PBT24 Femoral Ring



PBT46 Tendons (Tibialis, Hamstring, EDL etc.)



Achilles Tendon PBT01 With b/block PBT61 Without b/block

ITEM	REBATE CODE	DESCRIPTION
ACL unit	PBT02	Anterior Cruciate Ligament Unit - Patella & tendon with bone block that have been split.
Achilles Tendon	PBT01	Achilles tendon attached to the bone block from the (left/right) calcaneus: at least 15cm in length, including bone block.
Achilles Tendon - Without bone block	PBT61	Achilles tendon without section of calcaneal bone block. (Subject to availability)
Tendons	PBT46	Tendon (or ligament) without bone attachment; examples are FDL, EHL, Semitendinosus, Gracillus, Tibialis Anterior and Posterior.

ITEM	REBATE CODE	DESCRIPTION
Tibia – proximal with Patella	PBT44	Proximal Tibia with patella and tendon attached.
Tibia – Proximal without patella	PBT45	Proximal tibia including tibial plateau, without patella and tendon. (Subject to availability)
Patella unit whole with or without Tibial block	PBT40	Patella & tendon left whole with bone block.
Fibula	PBT25	May be removed in entirety including the head which articulates with the tibia, and the distal end (lateral malleolus).
Fibula segment (proximal/distal)	PBT28	Proximal or distal segment of the fibula.



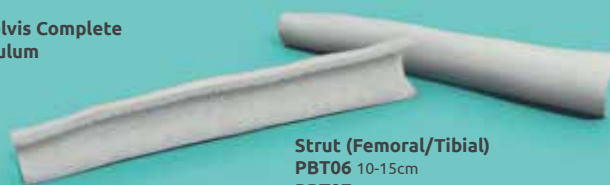
PBT40 Whole Patella Unit



PBT44 Proximal Tibia & Patella



Pelvis
PBT30 Hemipelvis Complete
PBT29 Acetabulum



Strut (Femoral/Tibial)
PBT06 10-15cm
PBT07 >15-19cm
PBT48 >20cm



PBT03 Fibular Ring

ITEM	REBATE CODE	DESCRIPTION
Bone Plug, Dowel , Block, Ring	PBT03	Small bone segments cut into block or ring shapes of various lengths and widths. May be cancellous or cortical or cortico-cancellous. Blocks are produced from femoral heads, patella, tibial or femoral metaphysis, tibial or femoral epiphysis; Rings are produced from fibula.
Strut 10 – 15cm	PBT06	Cortical segments (plates) of bone of various lengths and widths - generally femoral or tibial.
Strut >15cm – 19cm	PBT07	
Strut > 20cm	PBT48	
Osteotomy wedge	PBT60	Section of iliac crest or proximal tibia / tibial plateau or distal femur or femoral head with three facets covered by cortical bone. (Iliac wedge available upon request)
Iliac wedge –Tricortical	PBT32	
Iliac crest	PBT31	Wing of ileum resected from hemipelvis.
Hemipelvis –Complete	PBT30	Entire hemipelvis left or right, incorporating the ileum, ischium and pubis.
Hemipelvis –Acetabulum	PBT29	The cup of the pelvis / hip joint

ITEM	REBATE CODE	DESCRIPTION
Humerus–Whole	PBT33	Entire humerus including humeral head and both epicondyles distally, with or without rotator cuff mechanism of the shoulder.
Proximal Humerus -Without rotator cuff	PBT35	Proximal segment of humerus, including humeral head transected mid shaft, with or without rotator cuff mechanism of shoulder.
Proximal Humerus -With rotator cuff	PBT34	Proximal segment of humerus, including humeral head transected mid shaft, with rotator cuff mechanism of shoulder.

PBT33 Whole Humerus





A: Bone marrow



B: Bone



C: Muscle

PlusLife wishes to extend our sincere gratitude for the musculoskeletal confocal microscope images displayed in this catalogue which were kindly donated by **Dr Junjie Gao and Professor Minghao Zheng** from University of Western Australia.

Enhancing Lives
Because of You



PERTH BONE &
TISSUE BANK INC.

Address: Corner Helena Street &
Yelverton Drive, Midland

Postal: PO Box 5042 Midland
WA 6056

Phone: 08 6144 3500

Email: info@pluslife.org.au

Website: www.pluslife.org.au

ABN: 53 559 792 381

Please send order forms directly to

Email: tech@pluslife.org.au

Fax: 08 6144 4259



September 2018